

DAVIS

EyeCare Update

With innovative technology, excellent service and a caring team, we at Davis EyeCare have a responsibility to make our patients aware of what total eye health really means. We do this with great pride and commitment.

A Quarterly bulletin on new developments in the field of eyecare from Davis EyeCare—Your EyeCare Specialists

Winter 2008 Vol 9, No. 1

With innovative technology, excellent service and a caring team, we at Davis EyeCare have a responsibility to make our patients aware of what total eye health really means. We do this with great pride and commitment.

Special points of interest:

Visit us at our new website.
davisyecare.com

You can now make an appointment, order your contact lenses and solutions, find out information about important new developments in eyecare and general knowledge about your eye health.

On Call 24 Hours
Phone: 708-636-0600
Cell: 708-935-7375

In an emergency situation don't panic... just pick-up the phone and call someone you can trust. Treatment of all types of ocular infections, removal of foreign bodies from the eye, such as wood or metal, treatment of allergies or dry eye, patient advocate for laser vision consultation and in a pinch contact lens and eye glass replacements. Davis EyeCare is now proud to have at its disposal the most sophisticated instrumentation for glaucoma diagnosis and treatment. Don't worry, call the EyeCare Specialist—Davis EyeCare.

Loaner Lenses Available

Lost and broken contact lenses should not create a panic. In the event of a lost or damaged lens we will supply an immediate replacement for uninterrupted lens wear. Eyeglasses can also be replaced immediately. Davis EyeCare can fabricate a replacement from our large inventory. If you are in need of an immediate replacement visit our office or web site at www.davisyecare.com and communicate your requirements. Professional contact lens care makes the difference!

Vision Restored by Contact Lenses

Patients undergoing refractive surgery do not typically contemplate the subsequent possibility of spectacle or contact lens wear. The reality is that when complications occur, the use of contact lenses is often necessary and preferred to restore acuity and/or visual efficiency.

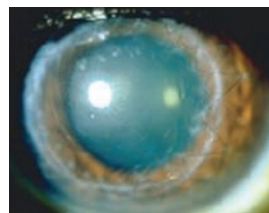


In the event of a corneal transplant from ocular injury or corneal damage from infection or trauma, contact lenses provide relief from a life-changing incident. Patients must remember that contact lenses provide a variety of options to solve the most difficult corneal surface irregularities. Soft lenses provide the comfort while rigid lenses provide the vision. Some of the many options include a piggy-back system created by the soft lens resting on the cornea providing the comfort acting as a band aide protecting the cornea from discomfort and the rigid lens resting on the soft lens delivering the vision while neutralizing the visual distortions.



Another option is a contact lens that has a hard center and a soft skirt providing both pristine vision and dramatic comfort all in one lens design. For many patients, surgery is part of a long, frustrating process. Some expectations simply can't be met. No matter how well the surgeon prepares the patient, sometimes they refuse to accept imperfect vision after surgery. This distress may be expressed as fear, depression or outright hostility. Poor eyesight can threaten independence. Some patients may be less dexterous and fearful about handling and caring for lenses. They may feel helpless and vulnerable. Davis Eye Care is committed to embrace these patients and navigate them through the menu of contact lens options.

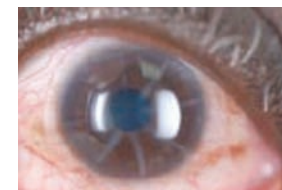
New therapeutic filtered contact lenses remove some of the glare and flare from light, which renders the visual system inoperative like a deer in headlights. Technology is racing forward developing new materials and methodologies solving problems that were insurmountable only a few years in the past. Techniques in the future will incorporate an enzyme transforming the cornea into a pliable piece of Jello, allowing it to be molded permanently into a shape that will correct for refractive error without surgery. Contact lenses imbedded with medicine will be prescribed for diseases such as glaucoma, infections and dry eye.



How best to treat a patient who has suffered vision loss due to corneal trauma, LASIK, RK or some other surgical procedure depends on a number of factors. Some of the symptoms and issues facing the doctor and patient include, but are not limited to the following:

- Reduced best corrected visual acuity
- Irregular or distorted corneas

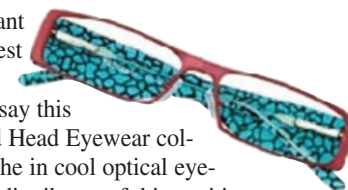
- Open wounds and/or weakened corneal flap
- Higher order aberrations
- Decentered optic zones
- Corneal ectasia
- Extremely dry eye
- Ocular pain and headaches
- Vitreous floaters
- Reduced contrast sensitivity
- Visual phenomena such as glare, flare, halos around lights, starbursts
- Overcorrection of the pre-surgical refractive error



There are a number of specialized lenses now available that will allow injured and corneal post-surgical patients to function visually on a much higher level with greater comfort. Davis EyeCare has come to rely on experience and expertise to address the vision and comfort issues that most injured corneal and post-refractive surgical patients are facing.

Davis EyeCare Trunk Show Featuring Bed Head

Aoyama Optical USA introduces vibrant colors such as red and pink in its newest "extreme" frame, with interior patterned designs. Company promotions say this bold wrap-style frame, part of the Bed Head Eyewear collection, is designed to fit "the racy niche in cool optical eyewear." Davis EyeCare is an exclusive distributor of this exciting new frame collection. In April we will offer an exclusive showing of the 2008 styles. Check out our website www.davisyecare.com for the exclusive trunk show announcement. Available will be all BedHead hair products.



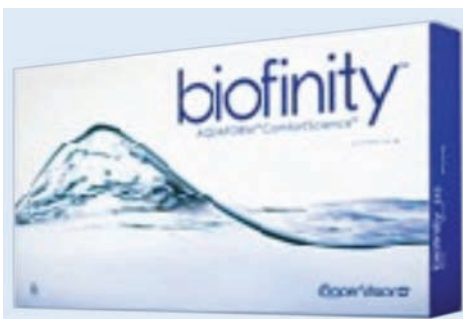
EyeCare Update

Davis EyeCareAssociates
4663 West 95th Street
Oak Lawn, Illinois 60453
(708) 636-0600
www.davisyecare.com

address correction requested

New Wettable Biofinity Disposable Lens

The first revolutionary silicone hydrogel soft lens that patients can see and feel the difference from conventional disposable soft lenses is now available. There are many lenses advertised on TV and magazines that patients ask us to dispense a trial. We know from experience that these diagnostic trial lenses perform inferior to the lenses the patient is already wearing. Biofinity is made from the breakthrough Aquaform material that allows greater levels of oxygen to freely

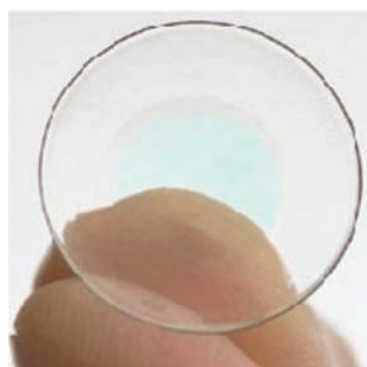


flow through the tears to the eye. Higher oxygen supply lenses are known to create whiter and healthier

looking eyes. Biofinity also maintains a high level of water to ensure the lens remains soft and flexible, delivering real comfort through the day and night. Combining this perfect balance of water and oxygen, biofinity feels almost as natural as wearing no lenses at all.

If you would like to be a candidate for these revolutionary new lenses, schedule an appointment and we will dispense a trial pair.

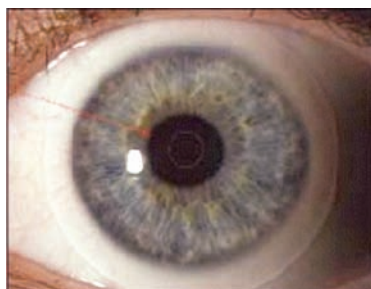
Finally... a Comfortable Multifocal!



glasses, or uncomfortable hard contact lenses? The versatile design of *SynergEyes® Multifocal* hybrid contact lenses gives you everything you need to enjoy precise vision at near and far distances.

The unique *SynergEyes® Multifocal* hybrid design eliminates the instability and hazy vision associated with other multifocal contact lenses. Whether you've lived with multiple pairs of glasses, or bifocals and contacts, you'll never have to juggle multiple vision solutions again. The precision of the rigid gas permeable center and the soft skirt of the revolutionary *SynergEyes® Multifocal* hybrid contact lens provides clear, crisp, consistent vision both far away and up close.

Typically, surface irregularities on the eye are reproduced in traditional soft contact lenses when they are worn. The *SynergEyes® Multifocal* eliminates surface irregularities by virtue of the rigid portion of the gas permeable lens and the tear film located between the eye and lens tear component. Nearsightedness, farsightedness, and astigmatism



are corrected by the distance power, while the crisp optics of the close-up power provides simultaneous computer and reading vision. The up-close clarity of the *SynergEyes® Multifocal* hybrid contact lens does not interfere with your distance vision, so you can now enjoy Ageless Vision Near and Far™. If you are experiencing blurry vision while reading because of presbyopia and would like to achieve simultaneous vision without compromising on comfort, presbyopic treatment with the *SynergEyes® Multifocal* contact lens may be the perfect solution.

What's more, *SynergEyes® Multifocal* contact lens care is simple and convenient. Whether needed for reading, driving, shopping, playing sports, or using a computer, consistently clear vision can now be achieved at all distances, in all directions, all the time. In addition, *SynergEyes® Multifocal's* patented HydrolEyes™ surface science maintains a high level of moisture, ensuring comfort all day and into the night.

Winterize Your Eyes

Most people don't think of winter as an allergy season. But if you are allergic to dust—or more accurately the mold, pollen and mites that linger in the dust—winter can be the worst time of the year. When the furnace kicks on, all the dust that has settled on the carpets gets stirred up and wreaks havoc with your eyes.

Managing eye allergies is possible. Vacuum with a HEPA filter 1-2 times per week. Clean around win-

dowsills, under sinks, and around the corners of bathrooms. These are areas where mold is likely to form.

Above all, keep in mind that managing eye allergies in an ongoing process. Vacuuming or disinfecting once will not remove allergens permanently. By following a cleaning routine, you are much more likely to be successful at managing eye allergies. Clinical trials show that Elestat™ solution is safe and

effective for administration to children 3 years old and older. You may also wish to consult with one of our doctors regarding prescription eye drops. Elestat, can help with itchiness, redness and tearing.



Contact Lenses and Make-up

Contact lens wear can be affected by many factors, including one that is often overlooked—eye make-up. Getting started right with your contact lenses involves going to Davis EyeCare which provides full-service care.

Since ancient history, women have worn cosmetics to enhance the appearance of their eyes. Most people who wear eye makeup never have a problem related to makeup use. Some women can develop an allergic reaction, infection or injury of the eye or eyelids. These problems can range from minor annoyance, such as tearing of the eyes, to visual loss. Although preservatives partly protect against infection, they can irritate the eye and skin.



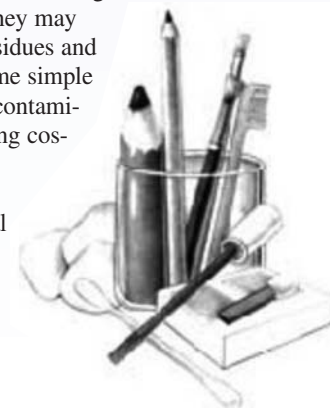
Additionally, some people may be allergic to fragrances or other ingredients in cosmetics. They may develop tearing, itching and redness of the eyes, or swelling and flaking of the eyelids. Here are a few tips that may lead to more successful contact lens wear. However, anyone who wears eye makeup should be aware of basic safety tips to help prevent injury or infection.

- Put contact lenses on before applying cosmetics to avoid picking up makeup residue.
- Avoid lash-extending mascara, which has fibers that may irritate the eye.
- The safest eye shadow is a cream since creams do not flake. If a powder is used, a base should be used on the lids first.
- Eyeliner must not be applied to the inner eyelid margins as this can block pores and cause styes and other lid infections.
- Use hair spray *before* putting on lenses.
- Choose water based liquid foundation because cream makeup may leave a film on your lenses.
- Never apply eye makeup in a moving vehicle. Scratching the cornea with a mascara wand, for example, can introduce bacteria to the eye creating a severe eye infection.
- Replace eye makeup at least every six months can help to prevent contamination and infection.
- Never use saliva to thin clumped makeup or to wet a mascara wand. Your saliva contains bacteria from your mouth.
- Do not use a safety pin or other sharp instrument to tease apart clumped eyelashes.

The most serious problem related to eye make-up involves injury to the cornea (the clear front surface of the eye), often during application of the cosmetic. A mascara or eyeliner wand or a fingernail can scratch the cornea (corneal abrasion). Occasionally a corneal abrasion can become infected leading to a potentially blinding corneal ulcer. Corneal injuries are usually painful and always require prompt medical attention.

- Do not share your eye cosmetics with others. Each person has different skin bacteria. If you contaminate your cosmetics with another person's bacteria, you may get an infection.
- **For Men**, it is important to keep shaving cream and after-shave away from the eyes. These products contain alcohol which can be a lingering irritant.

People who wear contact lenses are prone to corneal abrasions or corneal ulcers if they have poorly fitting lenses or get dust specks under the lens. In addition, they may contaminate their lenses with the oils, residues and possible bacteria found in cosmetics. Some simple precautions can minimize the chance of contamination. If you hurt your eye while applying cosmetics, it is important that an eye doctor examine you. Sometimes a minor injury can become serious without proper medical attention. If possible, take the applicator and cosmetic with you to the doctor so that the products may undergo tests for bacteria. Follow your doctor's advice on when to resume wearing eye makeup.



TonoPlus aids in early Glaucoma Detection

New research results suggest that we will be able to treat glaucoma preventatively prior to damage to the optic nerve and vision loss. Davis EyeCare is one of the first 50 practices worldwide to incorporate state of the art ocular blood flow analysis with the use of the "TonoPlus" system.

The instrument is able to measure and quantify the degree of blood flow to the anterior portion of the optic nerve to uncover glaucoma and stroke patients. Patients who have compromised ocular blood flow to the optic nerve are at increased risk to suffer glaucoma related disease. Glaucoma is a slowly progressive disease of the anterior optic nerve that, if not diagnosed and treated early, can result in a painless and progressive loss of vision and ultimately blindness.

Reduced blood flow measure is a highly significant risk factor for glaucoma. In addition, glaucoma treatment medications can improve



ocular blood flow. As such, we can now calculate the effectiveness of glaucoma medications beyond their ability to simply reduce intraocular fluid pressure. We now can measure the increase of blood flow to the optic nerve to protect the ocular system from vision loss.

Also, significant differences in ocular blood flow measures between the two eyes suggests the risk of carotid artery occlusive disease, which is a primary risk factor for stroke (especially for people with hypertension, elevated cholesterol/triglycerides, and diabetes). Ocular blood flow measurement is opening up a whole new world of information that will ultimately lead to earlier detection and improved treatment of glaucoma and vascular disease.

Along with a series of other sophisticated diagnostic technologies available at Davis EyeCare, we are able to determine which patients would benefit from preventative treatment to avoid vision loss due to reduction of blood flow to the ocular tissue.

Children's Eye Exams

We are often asked at what age a child should have an eye exam. We believe the first exam should be at six months. No, you can't hold an eye chart in front of an infant, but there are certain visual reflexes that can be checked. The next exam should be at around three years and again before kindergarten. There are certain high-risk ages when visual problems may arise.

2nd Grade: The child is learning to read and the print in books is no longer large type. The demand for close attention to detail is increased.

4th Grade: Now instead of learning to read, the child is reading to learn.

7th Grade: This is a time for a physical growth spurt combined with a tremendously increased demand for near work.

9th Grade: Reading assignments pile on and the pressure to achieve increases. If vision problems go uncorrected, a teenager may give up on schoolwork.

If at any time your child is having problems, or for no known reason drops to the lower third of the class, a vision exam is in order. Know your ABC's of signs and symptoms of vision trouble during the school year.

A Appearance of eyes: Crossed or pointing up, down, or out, red, watery

B Behavior: Squinting, rigid body posture, avoids close work, uses finger to read, blinks much and with effort, rubs eyes during reading

C Complaints: Blurred vision, headaches, nausea or dizziness, seeing double, tires quickly while reading

Mandatory Children's Eye Exam Bill

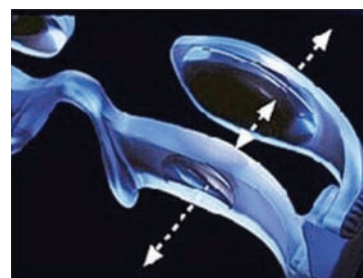
The Illinois Department of Public Health has begun work on rules to implement the requirement that all children have complete eye exams prior to beginning school. It is extremely important that all parents be prepared to bring their children into the office for a yearly exam prior to entry into the 2008 school year before the rush. We will need to ensure that all children including Medicaid/All Kids program participants have access to complete eye exams. The Illinois Congress has worked with the legislators in the passage of the law, and will begin a publicity campaign to encourage parents to have their children examined early, as soon as the rules are finalized.

Low Vision Rehabilitation



Low vision is a bilateral state of vision in which a person is unable to be corrected "normally" with the use of conventional glasses, contact lenses, medical intervention, surgery or therapy. Low vision can occur as a result of injury, a disease complication, birth defects, genetic predisposition, or aging. Low vision often presents as a loss of sharpness or contrast, distorted vision, light sensitivity, reduced visual acuity, or loss of visual field.

Low vision rehabilitation involves the evaluation of a patient's vision to



Gallilean design for a 20 degree field of view and 2.1x Magnification

allow for as close-to-normal functioning as possible. Low vision services are not a cure for vision problems but rather to help utilize the remaining vision to its fullest potential.

Some common conditions that can result in a person becoming a low vision patient are macular degeneration, diabetes, stroke, and glaucoma. These are only a few conditions which can have significant vision



Individually focusable objective lenses

reduction complications. In order to maximize a patient's functioning, visual aides such as magnifiers, telescopes, lighting aides, filters, computer software and electric magnifying devices can be prescribed based on the patient's functional needs. All these have the goal of maintaining or improving their independence. Each patient is evaluated according to their own specific visual needs which makes each case unique.

Major Breakthrough in Spectacle Lens Development

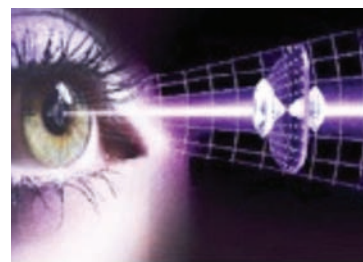
Spectacle lenses are no different than any other technology racing forward trying to find improvements providing advantages over customary glasses. Traditional production of spectacle lenses has intrinsic limitations. The resulting imperfections produce problems such as distortion, less-than-optimum clarity through some areas of the lens, and reduced fields of useful vision. Free Form multifocal lenses give an improved reading field and clearer distance vision.

One example of the limitation of traditionally made, mass-produced lenses is that many different powers are made using the same base curve on one side of the lens. This base curve will be ideal for only one of those powers, and other prescriptions that use the same curve will have some degree of power error, resulting in a loss of clarity.

Most of the advanced lens designs available today are produced using what is called freeform technology. Freeform technology means that both sides of the lenses are specially ground, whereas mass-produced spectacle lenses are molded in a cast on one side and specially ground only on one side.

Not only are both sides of the freeform lenses ground, but they are ground especially for each individual prescription – that is, your lenses are made just for you. This makes the lens power accurate not just at some parts of the lens but all over the lens surface.

So freeform manufacturing tech-



nology is a major advantage of providing clear vision.

Another advantage of freeform technology is that it enables the production of more sophisticated lens designs that can not be made using traditional methods. This is of particular benefit to multifocal lens wearers as it enables very accurate changes to be made to the lens design according to the wearer's activities and after identifying their most important needs.

With multifocal lenses the benefits for you of these more advanced designs, manufactured using freeform technology, include:

- clearer vision
- more natural vision in all directions
- stable image perception (the room doesn't move when your head moves)
- less head movements

So improvements in spectacle lens manufacture and design are constantly offering better solutions and reducing the inherent problems of standard, mass-produced lenses. They sometimes result, however, in a bewildering array of choices and costs when it comes to your lenses. Aside from the lens manufacture

and design, there also are a number of other important components of the lens, including the index of the lens material (a higher index keeps your lenses thinner) and the various coatings applied to the lens surface.

Our philosophy at Davis EyeCare is to recommend the best possible lens for your prescription – but of course there are often other options for you to choose from.

Our optical dispensers are technically trained and highly experienced in dealing with many lens types. They are able to guide you through the process of finding the lens that is right for you. Thinking about the thickness of your prescription, the frame you choose and the cost, ultimately the most important factor is how your new glasses will look.

We also use highly sophisticated equipment to measure how your selected frame sits on your face and where your lenses will sit in that frame.

One final point to remember is that not all designs are suitable for all people. If after two weeks of wearing the new lenses you are not comfortable with them, you should return to us to solve the optical problem. Occasionally we find that a patient is unable to wear a particular design comfortably and in these circumstances we will happily change the lenses for another design (without charge of course). This is part of our warranty that also includes unconditional protection against lens breakage within one year of purchase.

Seeing Clearly About DRY EYE

Systane® is an artificial tear that has already had an enormous impact on the way eyecare practitioners treat dry eye. The product is based on a novel polymer system, which, when instilled in the eye, the active component aids with the drop's binding to the hydrophobic surface, creating a soft, gelatinous network that improves lubrication and inhibits mechanical friction on the ocular surface.

Dry eye describes a disorder that causes inadequate wetting of the eye. Millions of people worldwide suffer from dry eye, making this a very common condition. It usually manifests itself as dryness, itchiness or scratchiness, burning or stinging, tired eyes and sometimes includes sensitivity to light. In short, it feels like there's something in the eye

causing general discomfort. Dry eye can occur as a result of the normal aging process, exposure to air pollution or other environmental factors, or in conjunction with disease.

Systane® is the first eye drop clinically proven to provide long-lasting relief from both signs and symptoms of dry eye.

Dry eyes can develop for two reasons: insufficient oil production by the meibomian glands (found in the inner eyelids) or too much evaporation of the eye's watery tears. Most people with dry eyes are affected by both low oil and high evaporation.

Lifestyle factors that contribute to dry eyes include:

- Looking at computers or reading without blinking often enough to redistribute eye fluid
- Living and working in dry places

- Wearing contact lenses that absorb eye fluids
- Having LASIK surgery, which cuts eye nerves, reducing impulses for blinking
- Taking medications like allergy pills, diuretics, beta-blockers, birth control pills or other drugs that dry out the body
- Diets that don't provide sufficient essential fatty acids or anti-inflammatory foods
- Droopy eyelids or certain health conditions, particularly autoimmune disorders like diabetes, arthritis, lupus, and Sjögren's syndrome, which also causes dryness in the mouth.

Conventional medicine generally stops here when it comes to identifying the cause of dry eye, but the root imbalances that lead to many

cases of dry eye extend much deeper, particularly for women in menopause. Often hormones play an important role in tear production and lubrication. Studies have linked androgen (testosterone) and estrogen receptors on the cornea of the eye and on the meibomian gland. This indicates a correlation between the production of tears and our sex hormones. When your eyes stay dry for too long, the result is localized inflammation. This immune response releases all kinds of inflammatory substances which make your eyes red, itchy, and swollen. The appearance of dry eyes often coincides with other signs of "drying" in menopause, like sore joints and dry mucous membranes. Restoring a natural internal balance between estrogen, progesterone and



testosterone is an important remedy for dry eyes. Everybody is unique so you may need to experiment to find a combination of changes that work for you. Supplemental essential fatty acids, in addition to a highly nutritious diet are helpful for dry eyes. Essential fatty acids, including EPA and DHA, plus vitamin E, helps the omega-3s do their work.

SYSTANE® offers all dry eye sufferers immediate and lasting relief of the most distressing symptoms—the perfect remedy for putting dry eye out of sight, out of mind.

Doctors on the Move...

Dr. Harold Davis was Honored by the Illinois College of Optometry this fall with the Life Time Achievement award. Dr. Davis was elected to Vice President by the National Academy of Practice in Optometry in Washington. This position is a leadership role of all ten Health Care Academy with their mission to consult with Congress of the direction for the country's health care. Dr. Davis will be lecturing in April 2008 in Buenos Aires, Argentina at the International Society of Contact Lens Specialists meeting. He is also the education chair, a post he has had for 10 years.

Dr. Brad Cogswell has been building a family over the last few years. In September his second child was born. Dr. Cogswell is busy keeping his son Will and his daughter Juliana from getting into trouble. When he is not building his family he is busy doing home projects. This April he will finish his certification with the ability to prescribe oral medications.

Dr. Rob Davis has been traveling, performing duties for the National Optometric Organization. Just last month he was in Tampa Bay, Phoenix and Las Vegas. His research has kept him busy presenting educational papers and posters both in the UK and the USA. Dr. Davis is like a kid in a toy shop looking for new technology to bring into the practice to improve the delivery of patient care.

Andrew Pail is our latest extern from Illinois College of Optometry on his contact lens rotation. He attended Shepard high school and graduated from Northwestern University.

Back page masthead.
(Waiting for art.)

New Z-pack for Eye Infections

Bacterial conjunctivitis is an infection of a part of the eye called the conjunctiva—the lining of your eyelid and some of the white of your eye. Bacterial conjunctivitis is caused by bugs that have

infected the eye. The most common sign is the whites of your eyes turning red. The inside of your eyelids may also become red. Waking up with red eye is not a pleasant feeling—your eyelids may seem stuck together by a gooey discharge. You may feel as if you've got something in one or both of your eyes that you just can't remove. Other symptoms may include burning, itching, eyelid swelling, and sensitivity to light.

Bacterial conjunctivitis may be contagious. AzaSite™ is a prescription medicine for eye infections that is specifically formulated for conjunctivitis. Most current medicines



for ocular infections require multiple drops to be effective. AzaSite™ is similar to a Z-pack and is effective after 7 days of treatment.

Below are ways to help reduce the chance of spreading ocular

infections:

- Always wash your hands every time you touch your eyes.
- Use your own towels and washcloths. Do not share them with other people.
- Use your own pillow. Wash or change your pillowcase every day until the infection goes away.
- Do not touch your infected eye with your fingers. Use tissues to wipe the eye.
- Do not use or share eye makeup.
- Do not wear contact lenses until the infection is gone.
- Do not share eyedrops.
- Do not put a patch over your eye.

Advances in Glaucoma Therapy

Glaucoma is the diagnosis given to a group of ocular conditions that contribute to the loss of retinal nerve fibers with a corresponding loss of vision. Glaucoma therefore is a disease of the optic nerve, the nerve bundle which carries images from the eyes retina to the brain.

The eyeball is basically a rigid sphere filled with fluid. As the total amount of fluid within the eye increases, so does the pressure, similar to over inflating a tire. Many people know that glaucoma has something to do with increased pressure inside the eye. The higher

the pressure inside the eye, the greater the chance of damage to the optic nerve. Glaucoma is said to be one of the leading causes of blindness in people over the age of 40.

It affects approximately two percent of that population. Loss of peripheral (vision off to the side) is the earliest symptom. Left untreated the field of vision will continue to narrow leading to tunnel vision. If detected early, loss of vision can most often be prevented.



Azopt is a carbonic anhydrase inhibitor (CAI). Carbonic anhydrase is an enzyme that is used by the body to produce aqueous (one of the fluids inside the eye). By inhibiting this enzyme the body produces less

aqueous and therefore the pressure in the eye is reduced by 15 to 20 percent.

Davis EyeCare specializes in protecting your vision by controlling the pressure in the eye. Azopt is one of the pharmaceutical agents used to control your ocular pressure to preserve your vision throughout your life.

Rapid Test for Viral Conjunctivitis

Recently, the FDA cleared a new medical device called the RPS Adeno

Detector™ that



NEGATIVE POSITIVE

can accurately aid physicians in determining the cause of conjunctivitis, otherwise known as pink eye. Contagious conjunctivitis is typically caused by either a virus or bacteria. Adenovirus is the most common overall cause of a red eye worldwide. The RPS Adeno Detector™ works like a pregnancy test or rapid strep test used to rule out strep throat in children with sore throats. A small tear sample is collected from the eye and transferred to the RPS Adeno Detector™. In 10 minutes, the test develops a result before the patient leaves the doctor's office; one line is negative and two lines is positive.

Distinguishing viral from bacterial disease is very important for several reasons. Unlike bacterial conjunctivitis that becomes relatively noncontagious after 48 hours of appropriate antibiotic therapy, adenoviral conjunctivitis does not improve with topical antibiotics and remains contagious until the eye is

no longer red and tearing. Patients with known adenovirus should be out of school, work, or daycare longer than bacterial disease. This can limit the overall

spread of disease. Additionally, some types of adenoviral conjunctivitis, but not bacterial conjunctivitis, can lead to persistent decreased vision, light sensitivity, tearing, and lid scarring. Preventing the transmission of viral disease can limit these complications.

Although both conditions usually resolve on their own over time, bacterial conjunctivitis gets better faster and becomes less contagious after using topical antibiotics. However, unnecessary antibiotics do not help with viral conjunctivitis and may cause eye allergies, corneal toxicity, and contribute to the growing problem of antibiotic resistance in the eye. Thus, the RPS Adeno Detector™ can provide health care professionals with a definitive result in 10 minutes and makes a laboratory confirmation of adenoviral conjunctivitis readily available at the time of the patient exam.